

# 57X-6RZ

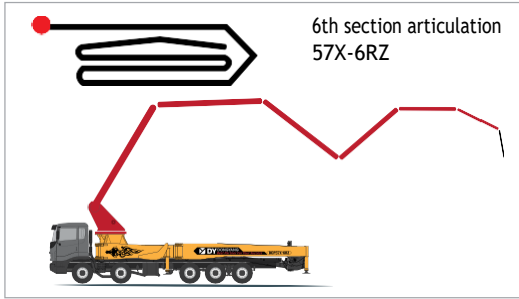


## 57X-6RZ DETAILS

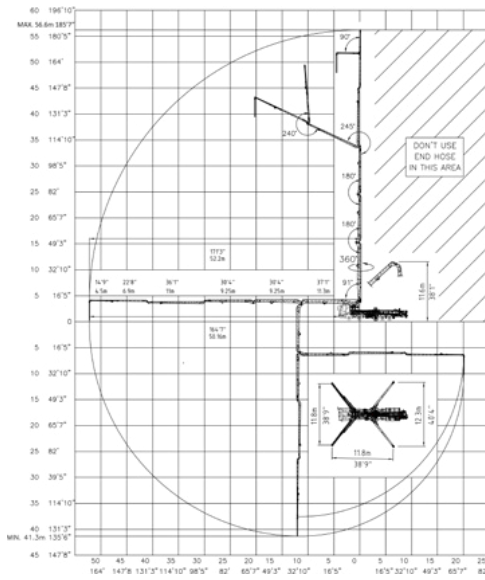
This 57-meter concrete boom pump provides a x-style outrigger layout for exceptional jobsite mobility. The 6-section design with simplified radio remote controls make it easier for operators to move the boom into the optimal position for less labor-intensive pumping of concrete. It's ideal for pumping concrete to upper floors of a building for walls and columns, as well as for foundations, decks, parking structures and more.

# 57X-6RZ SPECIFICATIONS

## BOOM TYPE: 6-SECTION RZ



## WORKING RANGE



## AXLE WEIGHTS

	LBS	KG
Total Weight	90,446 lbs	41,026 kg

## BOOM HEIGHT & REACH

Vertical Reach	185' 4"	56.5 m
Horizontal Reach	172' 3"	52.5 m
Reach From Front Of Truck	165' 7"	50.46 m
Reach Depth	136' 6"	41.6 m
Unfolding Height	38' 1"	11.6 m

## BOOM SECTION ARTICULATION

1st Section Articulation	91°
2nd Section Articulation	180°
3rd Section Articulation	180°
4th Section Articulation	245°
5th Section Articulation	240°
6th Section Articulation	90°

## BOOM SECTION LENGTHS

1st Section Length	37' 1"	11.2 m
2nd Section Length	30' 4"	9.25 m
3rd Section Length	30' 4"	9.25 m
4th Section Length	36' 1"	11 m
5th Section Length	22' 8"	6.9 m
6th Section Length	14' 9"	4.8 m

## GENERAL SPECIFICATIONS

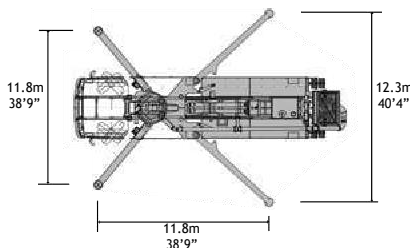
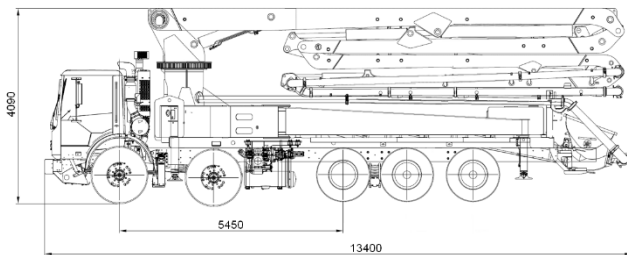
Water Tank Capacity	211 gallons	800 litres
Pipeline Size (ID) Metric Ends	5"	125 mm
Rotation	360°	Continuous
End Hose Length	11' 6"	3.5 m
End Hose Diameter	5"	125 mm
Outrigger Spread Front: Telescope Out	38' 9"	11.8 m
Outrigger Spread Rear: Swing Out	40' 4"	12.3 m

## PUMP SPECIFICATIONS

Output: Rod Side	235 yd <sup>3</sup> /hr	180 m <sup>3</sup> /hr
Output: Piston Side	141 yd <sup>3</sup> /hr	108 m <sup>3</sup> /hr
Pressure: Rod Side	1,261 psi	87 bar
Pressure: Piston Side	1,886 psi	130 bar
Material Cylinder Diameter	9"	230 mm
Max Strokes Per Minute	Rod Side Piston Side	34 23
Volume Control	Zero to Full	
Hopper Vibrator	Standard	
Hard-Chromed Material Cylinders	Standard	
Hydraulic System	Closed Loop	
Hydraulic System Pressure	5,075 psi	350 bar
Differential Cylinder Diameter	5.5"	140 mm
Rod Diameter	3"	80 mm

Photos and drawings are for illustrative purposes only. Dimensions will vary with different truck makes, models and specifications. For available options, please contact the factory.

## OVERALL DIMENSIONS AND OUTRIGGER SPREAD



This product specification could be changed by DY Corporation without notice to improve the quality.